

# Esthetic Screw Abutments

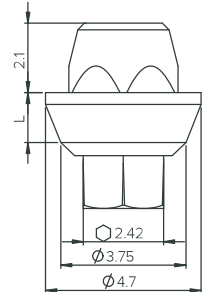
Esthetic Screw Abutment is designed for the screw retained rehabilitation process on single or multiple units.

The height of the abutment is selected according to the thickness of the mucosa.

The Esthetic Screw Abutment base is supplied with an appropriate screw adjusted to the height of the abutment together with a plastic sleeve for casting.

Sleeves are available with or without internal hex.

*Material: Titanium (Ti6Al4V ELI)*



Base	L (mm)
 NM-E1005	0.5
 NM-E1015	1.5
 NM-E1025	2.5

Screw	L (mm)
 NM-S1002	10.5
 NM-S1102	11.5
 NM-S1202	12.5

Hexed	Non-Hexed	L (mm)
 NM-C1015	 NM-C1007	12

