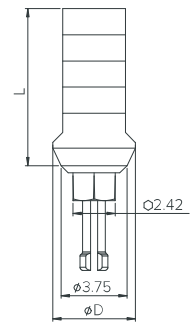
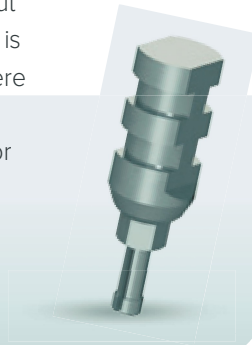

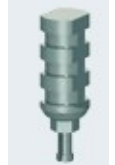


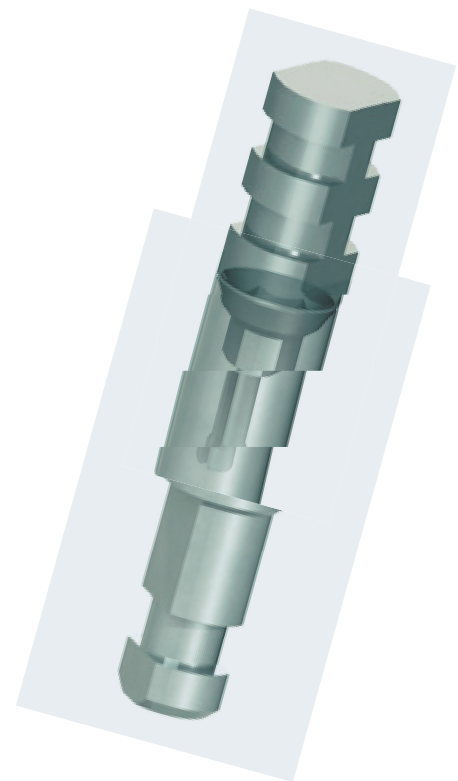
# Clip-On Transfer

A clip-on connection transfer for impressions without a screw has a hexagonal lock to ensure a tight fit. It is especially effective with molars and premolars, where there is a lack of space, and where working with a driver is difficult. It is sufficient to use this transfer for all types of impressions as the lack of screws saves significant amount of time.



*Material: Stainless Steel*

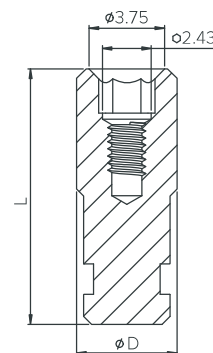


Transfer	$\phi D$ (mm)	L (mm)
 NM-T3409	4.7	9
 NM-T3413	4.7	13



## Analog

Analog	$\phi D$ (mm)	L (mm)
 NM-T6004	4	12.7
 NM-T6005	5	12.7



The analog is made of stainless steel and is used in the preparation of laboratory models.

*Material: Stainless Steel*