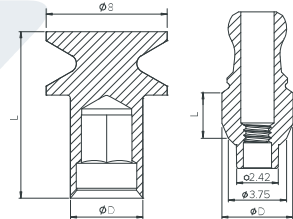








# Snap-On Transfer


The Snap-On Transfer is made of titanium alloy TI-6AL-4V and designed for impressions using the closed-tray technique, in conjunction with the cap T4402. The cap remains in the impression tray after it is removed from the mouth. It is also possible to use this type of transfer as esthetic abutments.

*Material: Titanium (Ti6Al4V ELI)*



## Plastic Cap for Snap-On Transfer

Transfer	$\phi D$ (mm)	L1 (mm)
 NM-T3802	4.8	2
 NM-T3803	4.8	3
 NM-T3804	4.8	4
 NM-T3805	4.8	5
 NM-T3806	4.8	6
 NM-S8324	Included with all abutments above & available separately	

Cap	$\phi D$ (mm)	L (mm)
 NM-T4402	4.8	11

