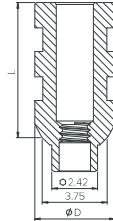
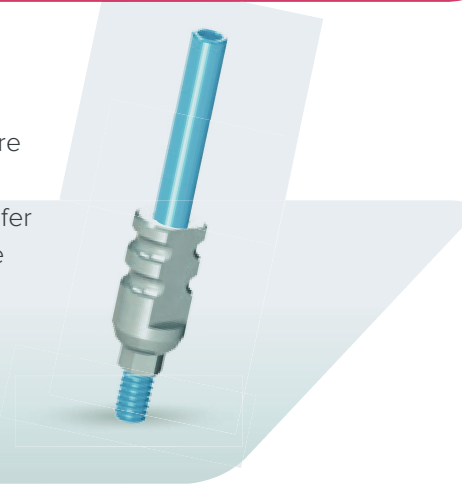




Open & Closed Tray Transfers

Transfers are designed for impressions using the open-tray technique when the retentions are sharp, and for the closed-tray technique when the retentions are round. The body of the transfer is made of stainless steel; the screws are made of titanium alloy.






Material: Stainless Steel



Open Tray Transfer

Transfer	Ø D (mm)	L (mm)
 NM-T4008	4.75	8
 NM-T4202	4.75	8
 NM-T4201	4.3	12
 NM-T4012	4.75	12
 NM-S2418	Screw 24_{mm} Included with all transfers above & available separately	

Closed Tray Transfer

Transfer	Ø D (mm)	L (mm)
 NM-T3507	3.85	12
 NM-T3511	4.5	12
 NM-S1610	Screw 16_{mm} Included with all transfers above & available separately	
 NM-T3601	4.75	8
 NM-S1307	Screw 13_{mm} Included with all transfers above & available separately	